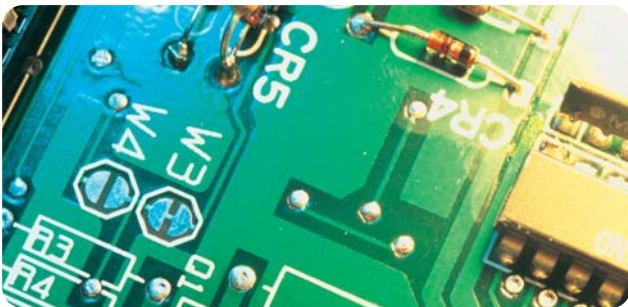




Just-in-time. Best-in-class.

The DeltaWMS:Manufacturing best-in-class warehouse management solution has been developed to meet the specialist needs of today's just-in-time manufacturing environment, enabling all warehouse activities to be fully integrated with the organisation's host MRP system.



Fully automated

Automated receipt allows palletised, shrink wrapped stock to be conveyed directly from the production line into the warehouse environment. SSCC (serial shipping container code) label certification, batch and lot control, raw materials management, finished goods, packaging and consumables control are also automated using DeltaWMS:Manufacturing.

DeltaWMS enables full stock traceability - from point of receipt to point of despatch – for every item that moves through the warehouse.

Suitable for both single- and multi-site users, DeltaWMS: Manufacturing has an open database and can be quickly and cost-effectively implemented within any manufacturing enterprise or smaller business to deliver immediate bottom line benefits and a faster return on investment.

Benefits

Why choose DeltaWMS Manufacturing?

- ✓ **Developed specifically** for today's just-in-time manufacturing environment
- ✓ **Easy supply chain integration** with purchasing, sales order processing or MRP systems
- ✓ **Improves stock location accuracy** and customer service
- ✓ Automated receipt allows **direct production-to-warehouse stock transfer**
- ✓ **Automated SSCC label certification**, batch and lot control
- ✓ Unique DeltaWMS graphical warehouse inventory 'map' **optimises productivity**



Case study

Mini Clipper

"We looked around the marketplace [researching a new warehouse system] and as part of that process we visited some sites where Delta's warehouse management system was running. We liked the power and flexibility of the system and in particular, we liked the on-screen digital warehouse map".

"The reports we can run off [the Delta system] are superb".

"Customers can key in and drop their orders straight into the company's order pool, electronically – in the case of larger customers this saves up to 20 hours a week".

"The customer relationships are closer, the margins are better and the opportunities are more attractive. I believe we have found a winning formula".

Peter Masters
Managing Director
Mini Clipper



Easy supply chain integration

DeltaWMS' tried and tested EDI interfaces using Microsoft's © industry-standard DTS technology simplify integration with core supply chain applications such as purchasing, sales order processing or MRP systems.

The system's web browser module allows both users to directly manage stock and orders from anywhere in the world, 24/7 and in real-time, improving customer service and reducing administration. Powerful reporting functions within the DeltaWMS environment allow an organisation to manage all aspects of warehouse operation, including individual performance: while email integration allows reports to be sent to staff or suppliers, 24/7.

Unrivalled product definition flexibility enables multiple storage and picking methods. User-defined parameters make it possible to define virtually any stock item regardless of shape, size, unit of measure or unit quantity, with stock (for example) defined as palletised, unpalletised or mixed and storage areas defined as ambient, chilled, frozen etc. Locations can be defined (for example) as bulk, block stack, racked, narrow aisle, P&D, pick-face or quarantine.



For a **FREE**
consultation call
01977 669930

email
info@deltawms.co.uk

or visit
www.deltawms.co.uk

simple - sophisticated - affordable

Whitwood Lodge Whitwood Lane Whitwood Wakefield WF10 5QD
t +44 (0)1977 669930 f +44 (0)1977 668378 e info@deltawms.co.uk deltawms.co.uk

Delta Software Ltd Registered in England No. 4444341

DeltaWMS Functions

- Receipt/Intake Processing
- Despatch Order Processing
- Warehouse Map
- Alerts
- Stock Maintenance
- Stock Count
- RF Management
- EDI
- System Maintenance
- Reports
- Enquiries
- Invoicing

Receipt Processing

Receipts may commence with a pre-receipt submitted into the pre-receipt pool, modified, then at a later time received and confirmed as put-away. Stock attributes such as Batch, Use by Date, etc. may be recorded on receipt into warehouse. Stock can be automatically or manually put on hold e.g. for quality assurance checking.

Despatch Processing

Like receipts, despatch orders may commence initially as an entry in the order pool, modified, stock availability checks performed, create pick instructions and finally pick/despatch confirmation. User defined picking rules and despatch note formats may be employed.

Warehouse Map

Through the logical map users may perform the following:

- Enquiries – Product/Stock/Location/Areas
- Transfer stock to another location
- Change stock account ownership
- Put stock on hold
- Negative adjust stock
- Change stock condition
- Maintain locations
- Maintain areas
- Generate reports

Alerts

The Alert function highlights to users events in the pre-receipt pool, order pool, task pool, pick face replenishments, re-order levels, EDI and batch reports.

Stock Maintenance

Covers functions such as stock adjustments, hold/release stock, stock condition changes, etc.

Stock Counts

Various count methods are available from complete checks to stock account/product checks, location range checks. Perpetual checks may be submitted based on location check frequency or location quantity thresholds.



RF Management

Allows the set-up, configuration and control of all RF resources and includes: users, trucks, access/working areas, task priorities and RF controlled functions.

EDI

DeltaWMS performs its EDI integration via Microsoft Data Transformation Services (DTS). DTS enables extensive and virtually unlimited integration capability.

Master File Maintenance

Sites/Warehouse
Accounts
Products
Locations
Areas
Hauliers

Invoicing

RH&D charges by pallet, case, item. Full load charge.
Picking charges by pallet, case, item
Unlimited sundry charges on receipt, despatch or ad-hoc.
Rental charges by pallet, case, item. Charge methods: highpoint or day of week.
Minimum weekly rental charges
Rent free days
Auto-emailing of invoices

System Requirements

PC Client:
Microsoft Windows 32-Bit XP-Professional
Microsoft Windows 2000 Professional

PC Server:
Microsoft Windows 2000/2003
Microsoft SQL Server 2005

Network: TCP/IP

Remote Support: Via broadband internet connection with VPN termination

Deployment Options:
Windows Client Server
Microsoft Terminal Services
Citrix
Web Browser + IIS server with ASP.Net
Email. MS Exchange/Outlook